



# INSTALLATION INSTRUCTIONS

MODEL: US-1075GG

DESCRIPTION: Girder Grip

MEETS OSHA & ANSI Z359.1



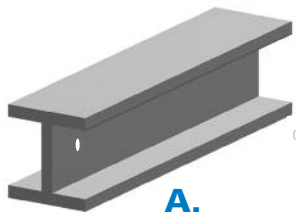
1-800-850-5914

PHOENIX, ARIZONA USA

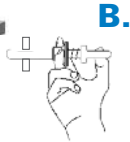
WWW.ULTRASAFEUSA.COM

## STEP 1

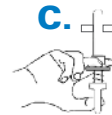
Preparation for using US-1075GG. Drill 1" Hole in Girder(a.). Place US-1075GG in hand as shown(b.). Beam can be horizontal(a.) or vertical(c.).



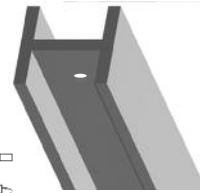
A.



B.

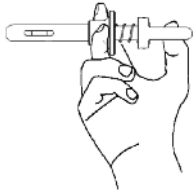


C.



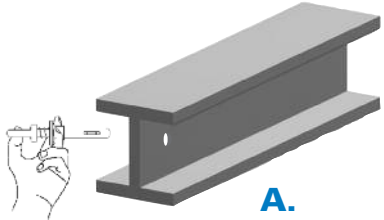
## STEP 2

Depress the trigger by squeezing the trigger while thumb is in eye of Grip. This straightens out the moveable anchor bar to allow insertion in hole.

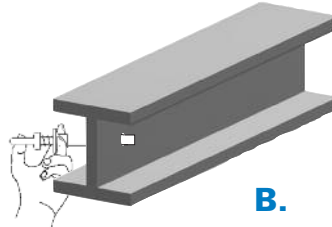


## STEP 3

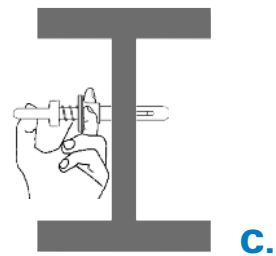
While keeping the anchor trigger depressed(a) insert into the hole all the way(b.,c.).



A.



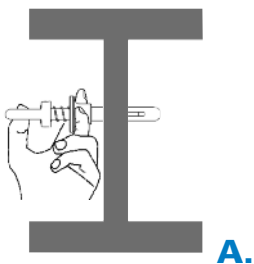
B.



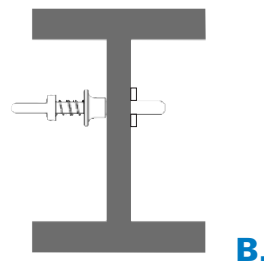
C.

## STEP 4

After insertion, release the anchor trigger (a.) causing the anchor bar to return to normal position(b.). You may now connect carabiner, snaphook, etc, as needed,



A.



B.